

The Young Professional Network exists to empower future community leaders through professional development, personal growth and networking opportunities.



What is YPN?

YPN (Young Professional Network) is a chamber committee of the Kearney Area Chamber of Commerce. With over 70 members we are the currently the largest chamber committee. Our membership is comprised of professionals in the 21-40 age bracket.

How do you join YPN?

Our membership rate is currently \$50. However, we do offer a reduced rate of \$35 if your employer is a Kearney Area Chamber Member. Many companies encourage employee participation in community organizations and will pay your membership fee for you. Ask your boss or someone in HR if that option is available.



Contact Jennie Nollette at the KACC to sign up!


What will you get from joining YPN?


YPN exists to empower future community leaders. We achieve this effort by offering:

- Bi-Monthly Networking Opportunities at a variety of Chamber-member venues.
- Personal & Professional Development Seminars.
- Volunteer projects with local non-profits.
- Special Events at regional venues at a reduced cost.



*Note: Non-Members are still welcome at YPN events. However, we do offer reduced rates of event admission for our members.

 TIP: Attend our most heavily participated event: 1st Fridays! Meet us a new spot every month for happy hour. First round of drinks and appetizers are on us!

Make sure you are signed up to receive our e-Newsletter. Re-cap past events and be in the know about what's coming up. 

YPN Activities

You can expect there to be two events planned per month including our 1st Friday Social and one other event; alternating between a Personal and Professional Development, Special Event, and Community and Chamber Relations. In addition to our own activities we encourage our members to support the chamber by attending their events.



We have created committees to help plan YPN events. If you are interested in serving in a leadership position and joining a committee, please contact the committee chair for the committee you'd like to join.

COMMITTEES

Special Events

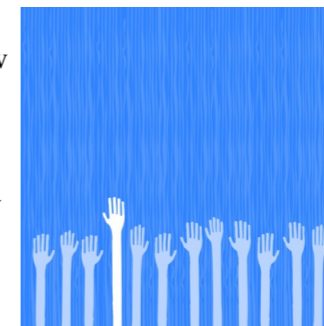
Plans events that you might not otherwise be able to attend or that can be offered at a reduced rate. Past events include wine tasting, skeet shooting, golf clinics and more.

Personal & Professional Development

Topics have included being a first time home buyer, how to negotiate in the workplace, being credit savvy, how to serve on a board and others.

Community & Chamber Relations

Volunteering offers a way to learn new skills and invest in our community. We have worked with organizations such as, the Red Cross and Habitat for Humanity as well as the Kearney Area Chamber of Commerce.



Marketing Committee

Works to promote YPN as and organization to the community and our events to the membership.

BOARD OF DIRECTORS & COMMITTEE CHAIRS



President—Michael Strong
Waddell & Reed Financial Advisors
mastrong@wradvisors.com

Vice President—Corey McIntosh
Nebraska Public Power District
cjmcint@nppd.com

Past President—Andrew Williams
Central Nebraska Bank
andrewcnb@frontier.com

Treasurer—Kelli Vohland
Hellman, Main, Coslor & Kathol
kelli@hmck.net

Secretary/Marketing—Penny Parker
United Way of the Kearney Area
pparker@uwka.org

Social Committee Chairs—Josh & Brooke Pierce
University of Nebraska at Kearney & Scorr Marketing
piercejw1@unk.edu & brook@scormarketing.com

Community Relations—Jonathan Nikkila
jonathannikkila@hotmail.com

Personal & Professional Development
Jordan Seevers — *Platte Valley State Bank*
jseevers@pvsb.com

Board Member at Large—Andrea McClintic
Nebraska Department of Economic Development
andreaemclintic@yahoo.com

Board Member at Large—Taffnee Faimon
University of Nebraska at Kearney
taffneeamber@yahoo.com

Chamber Representative—Jennie Nollette
Kearney Area Chamber of Commerce
jnollette@kearneycoc.org

Kearney Area Chamber of Commerce
Young Professional Network

1007 2nd Avenue
PO Box 607

Phone: 308-237-3101
Toll Free: 1-800-227-8340

